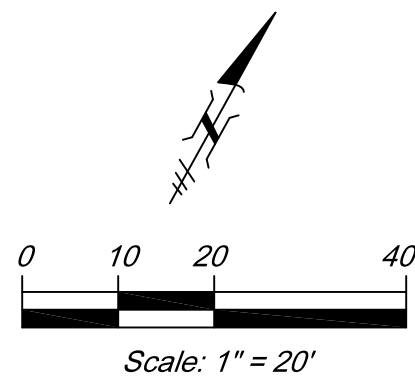
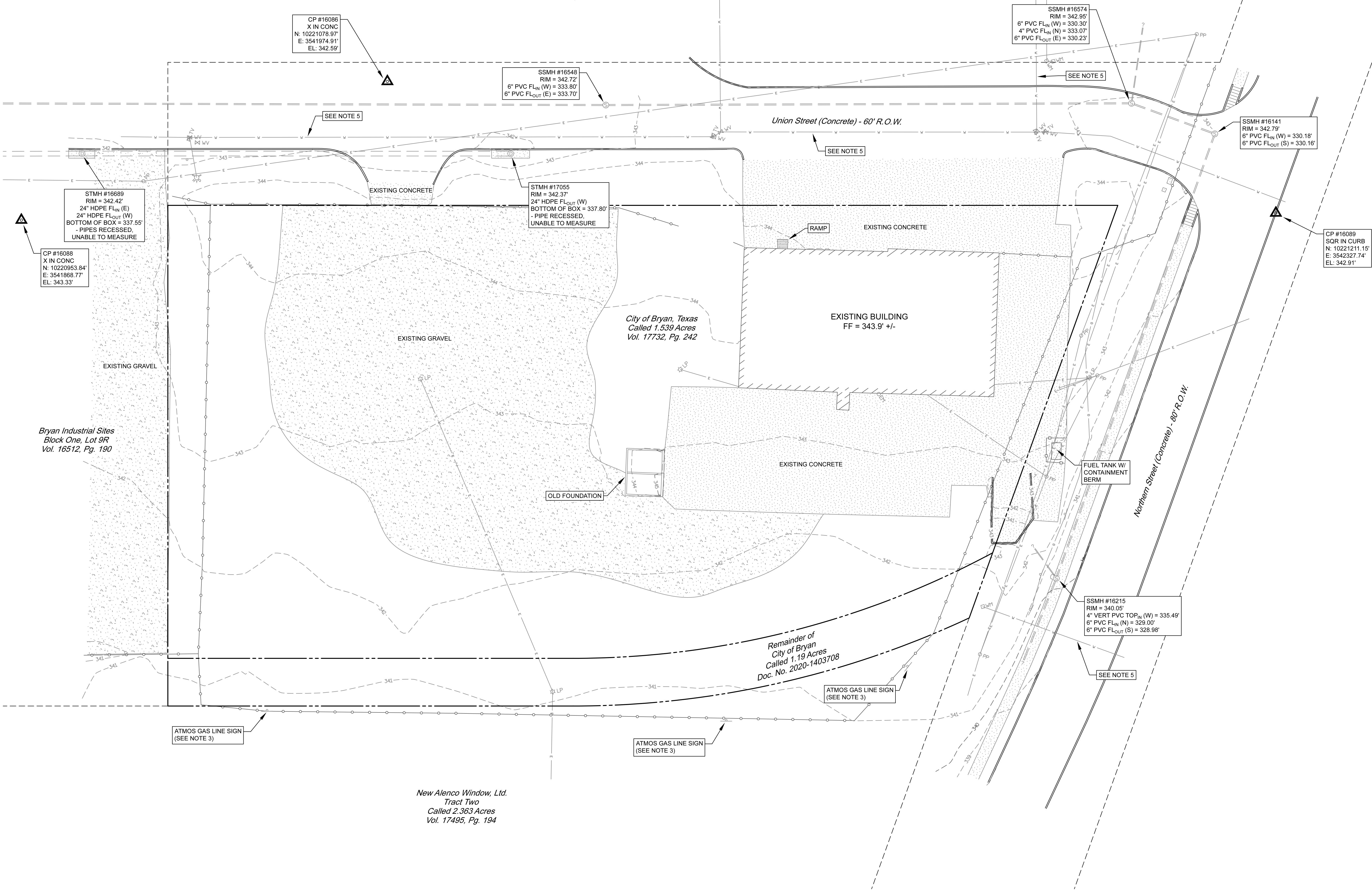


Bryan Industrial Sites
Block One, Lot 9R
Vol. 16512, Pg. 190



Legend	
	Boundary (Approximate)
	Adjoining Boundary (Approximate)
	Chainlink Fence
	Electric Line
	Gas Line
	Water Line
	Power Pole
	Light Pole
	Guy Wire
	Electric Meter
	Test Valve
	Water Meter
	Water Valve
	Hydrant
	Sanitary Sewer Manhole
	Storm Drain Manhole
	Sign
	Control Point/Benchmark

- Notes:
- This is not a Boundary Survey. All boundary lines shown hereon are approximated and shown for informational purposes only.
 - Utilities shown are based on a 611 Locate Request (Ticket No. 2460217167), information provided by the City of Bryan, and visible observations.
 - According to Michael Edlen with Magnolia-River (256-957-9711, michael.edlen@magnolia-river.com) there is a gas pipeline in the vicinity of the southeast line of this tract. No marks on the ground were provided.
 - Coordinates and elevations are based on NAD 83 Texas Central Zone Grid Values.
 - Revised 02/27/2025 to show approximate water line locations provided by Garrett Carlson (GIS Project Coordinator, City of Bryan - gcarlson@bryantx.gov, 832-949-6566).
 - Revised 03/18/2025 to change the linetype of the boundary between the two subject tracts.

[illegible]

Point Table			
Point #	Raw Description	Northing	Easting
1	CONC	10221038.7068	3541961.0761
2	CONC	10221074.4889	3542026.0401
3	CONC	10221042.1902	3542015.7782
4	CONC	10221038.7311	3542017.0871
5	CONC/SW	10221056.7934	3542049.7222
6	CONC	10220922.5602	3542053.8066
7	CONC	10220912.0222	3542086.3625
8	CONC	10220949.1644	3542109.2911
9	CONC	10220981.7515	3542179.3133
10	CONC	10221016.5233	3542190.6385
11	CONC	10221021.9184	3542210.5114
12	CONC	10221011.3588	3542242.9329
13	CONC/SW	10221026.5602	3542185.0834
14	CONC/SW	10221036.2451	3542202.5821
15	CONC/SW	10220976.2996	3542094.2727
16	SW	10221075.8522	3542274.1443
17	BLDG/SW	10221081.1018	3542271.2388
18	BLDG/SW	10221041.4947	3542199.6766
19	BLDG/SW	10221031.8098	3542182.1779
20	BLDG/CONC	10221032.7212	3542181.6735
21	BLDG/CONC	10221042.4060	3542199.1722
22	BLDG/CONC	10220981.5492	3542091.3672
23	BC	10221009.1032	3542296.1530
24	BC	10221011.1653	3542300.6763
25	BC	10220998.1529	3542323.8713
26	BC	10220998.7414	3542329.3397
27	SW	10220993.2403	3542324.9520
28	SW	10220993.7646	3542329.8235
29	BC	10220990.3846	3542334.1638
30	BC	10221003.0596	3542329.3778
31	BC	10221009.3265	3542322.4931
32	BC	10221048.2232	3542317.0163
33	BC	10221055.8141	3542321.9724
34	BC	10221069.0510	3542323.5263
35	BC	10221060.1019	3542321.2790
36	BC	10221059.1441	3542315.3559
37	SW	10221064.1791	3542315.1706
38	SW	10221064.9419	3542320.0099
39	BC	10221036.8039	3542296.4238
40	BC	10221034.6943	3542291.8906
41	BLDG/CONC	10221051.5438	3542052.6277
42	BLDG/CONC	10221100.8930	3542143.9428
43	BLDG/CONC	10221110.5779	3542161.4415
44	CONC/SW	10221101.8044	3542143.4384
45	CONC/SW	10221111.4893	3542160.9370
46	CONC/SW	10221116.7523	3542158.0559
47	CONC/SW	10221107.0540	3542140.5329
48	BC	10221110.0235	3542138.2884
49	BC	10221120.4412	3542157.1110
50	BC	10221125.2299	3542156.1119
51	BC	10221113.9136	3542135.3224
52	BC	10221118.5144	3542105.3601
53	BC	10221149.4844	3542169.0340
54	BC	10221147.7263	3542175.1503
55	BC/SW	10221131.2581	3542184.2649
56	SW	10221162.4883	3542253.0820
57	BC/SW	10221167.7379	3542250.1765
58	BC	10221187.1495	3542239.4328
59	BC	10221193.1199	3542240.9459
60	CONC	10221194.7086	3542239.9301
61	CONC	10221119.8256	3542104.6316
62	BLDG/SW	10221151.0964	3542232.4992
63	CONC	10220943.2232	3542096.5246
64	CONC	10220953.7170	3542064.1394

